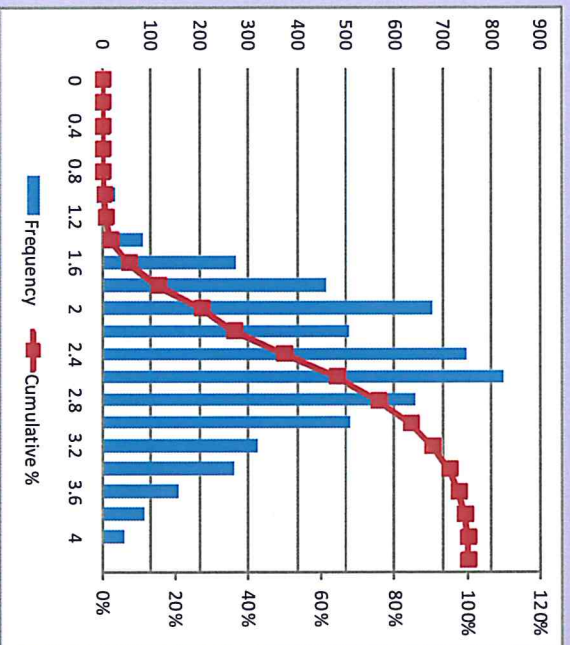


Performance of Commencing Higher & Technical Education Students

In 2014, there were 21,168 school leavers and 5,628 were selected for entry into higher and technical education.

The average GPA scored by the selected school leavers in this year was 2.5. They scored between the GPA range of 0.4-4.0. However, the majority of the selected students scored between the GPA range of 2.0-2.8.

Selected School Leavers GPA Distribution for 2014



DEPARTMENT OF HIGHER EDUCATION, RESEARCH, SCIENCE AND TECHNOLOGY



Higher & Technical Education Statistics 2014



Providing the higher skills, knowledge and innovation needed for PNG's sustainable development

Mutual Rumana Building, Waigani Drive
 PO Box 5117, Boroko, NCD 111
 Port Moresby
 Papua New Guinea
 T: 301 2052 / 2053
 F: 325 8386
 W: www.dherst.gov.pg

Higher and Technical Education Statistics

The Department of Higher Education, Research, Science and Technology (DHERST) has a broad range of policy, coordination, regulatory, financing, and program management responsibilities for Papua New Guinea's tertiary (post-secondary) education, encompassing both higher and technical education. These responsibilities are mandated under the *Higher Education (General Provisions) Act 2014*.

In performing its functions, DHERST gathers statistics annually to monitor the sector's performance against sector plans and strategies, the PNG Development Strategic Plan 2010-2030, and PNG Vision 2050.

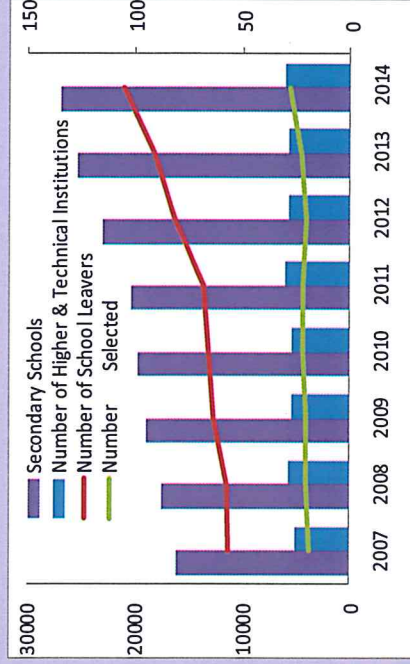
Higher & Technical Education Commencements

The number of commencing students for higher and technical education has generally increased since 2007 at a rate of 6 percent. This was due to increased enrolment in secondary education, resulting in more students seeking a place in higher education.

School Leavers Selected for Higher and Technical Education 2007-2014

| Year | Secondary Schools | Number of School Leavers | Number Selected |
|------|-------------------|--------------------------|-----------------|
| 2007 | 82 | 10,513 | 3,866 |
| 2008 | 88 | 11,188 | 3,641 |
| 2009 | 94 | 12,346 | 3,924 |
| 2010 | 100 | 13,203 | 4,103 |
| 2011 | 103 | 13,624 | 2,626 |
| 2012 | 115 | 15,887 | 3,762 |
| 2013 | 128 | 17,460 | 4,614 |
| 2014 | 129 | 21,168 | 5,628 |

School Leavers Selected for Higher & Technical Education 2007-2014



Higher & Technical Education Total Enrolments

The total higher and technical education student enrolment has increased over the years. The total enrolment has generally increased at a rate of 8 percent since 2007. The increase reflects the increased enrolments in secondary schools due to the increased number of secondary institutions and the free education policy.

Higher & Technical Education Total Enrolments 2007-2014

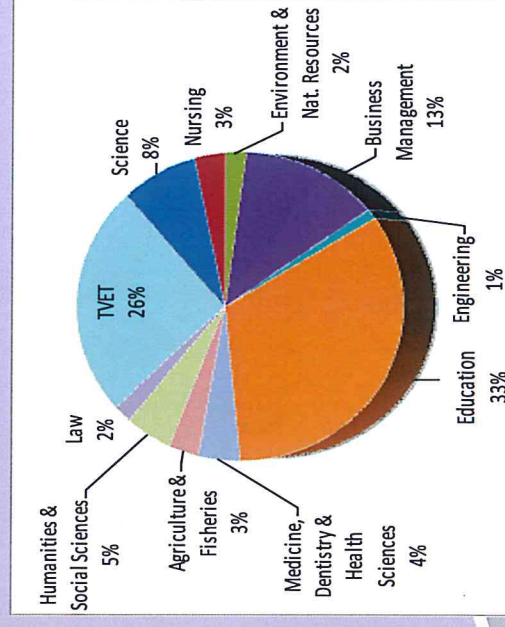
| Year | Number of HTE Institutions | HTE Enrolments |
|------|----------------------------|----------------|
| 2007 | 26 | 24,393 |
| 2008 | 29 | 27,807 |
| 2009 | 27 | 29,371 |
| 2010 | 27 | 23,912 |
| 2011 | 30 | 28,799 |
| 2012 | 29 | 28,596 |
| 2013 | 29 | 31,182 |
| 2014 | 30 | 32,283 (est.) |

Higher and Technical Education Total Graduates

Higher & Technical Education Graduates 2007-2014

| Year | HTE Graduates |
|------|---------------|
| 2007 | 4,931 |
| 2008 | 6,548 |
| 2009 | 5,372 |
| 2010 | 6,993 |
| 2011 | 7,735 |
| 2012 | 7,979 |
| 2013 | 9,316 |
| 2014 | 10,489 (est.) |

Higher & Technical Education Graduates by Key Study Field 2013



In 2013, the majority of graduates were from the key study field of education with 33 percent, followed by TVET with 26 percent.